

# PROJECT SHEET – Callemondah

## PROJECT OVERVIEW

Callemondah turnout & track upgrade

Replacement of life expired track sections

*First composite turnout installation in Queensland*

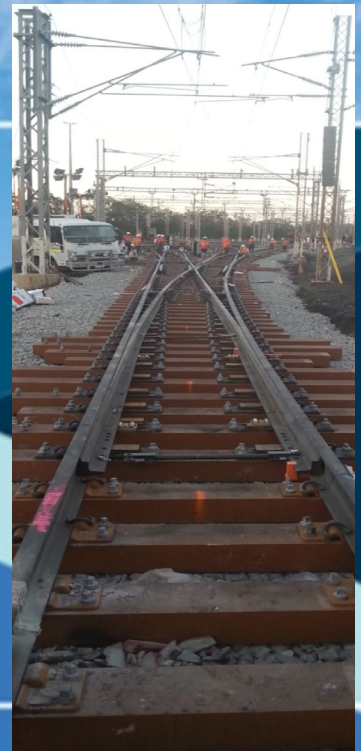
## PROJECT DETAILS:

Start Date **Sept-17**

Completion Date **Apr-18**

Contract Type **Fixed Price**

Replacement of railway ladder and associated track & level crossings undertaken over three stages. All components replaced with new 60kg rail seated on new Sekisui FFU composite bearers.



## SCOPE OF WORKS

The construction works for the project included

- 8 turnouts
- 350m track
- 1 main road level crossing
- Full ballast replacement & earthworks throughout
- Subgrade treatment for hard rock areas
- Quality works (Weld/adjust/resurface/heights & staggers)

